



TestShell Solutions for Lab Management



A fully integrated test lab automation solution for lab efficiency and cost savings

The Lab Management Challenge: Low Asset Utilization

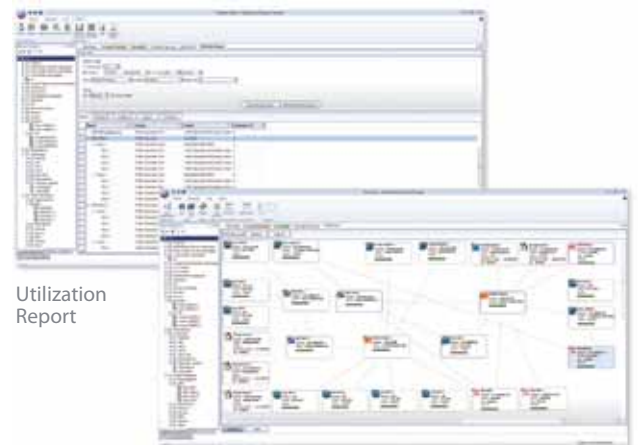
Test labs represent a significant investment for technology manufacturers, service providers, as well as enterprise and government IT departments. Millions of dollars in real estate, power and capital are devoted to testing equipment, services and IT infrastructure. Yet, in many cases, test lab operations are highly inefficient due to manual processes and lack of automation. Engineers spend inordinate amounts of time and effort locating, connecting, and configuring equipment into test topologies manually. Inventory systems, design tools, equipment connectivity and configuration tasks are disjoint, multiplying work and increasing the chances of mistakes. Lack of centralized reservation and scheduling leads to costly errors such as engineers disconnecting active test topologies. The result is that test lab assets are under-utilized, sometimes dramatically so. To compensate for these inefficiencies, business managers must make large annual capital and operating expense outlays in order to increase testing capacity.

TestShell: A Game Changer for Lab Performance

TestShell is a holistic solution for efficient and streamlined test lab automation, providing centralized resource management and control, reservation and scheduling capabilities, as well as simple creation of topologies and automated procedures. TestShell helps engineering and test teams optimize lab performance, leading to significant OPEX and CAPEX savings.

Complete test lab infrastructure management

- Centralized inventory management of all resources in the lab, including devices under test (DUTs), test generators, connectivity equipment and peripherals
- Management of both physical and virtual elements such as server, network, storage and virtual machines (VMs)
- Quick search and location of devices by tagging them with user-defined parameters such as model, version and speed
- Independent creation of device type and structure, enabling custom devices to be added to the resource pool
- Visual lab monitoring, device usage and resource availability tracking



Utilization Report

Lab Monitoring

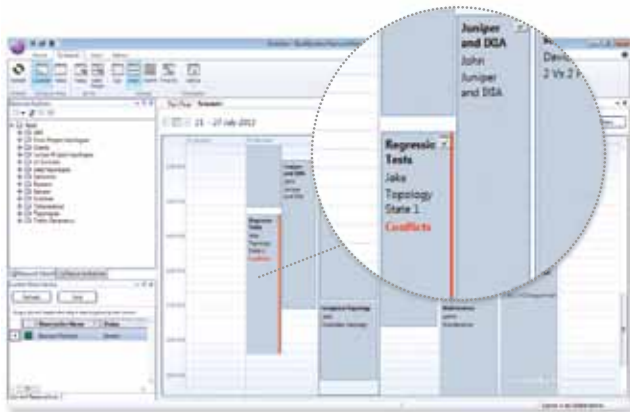


Inventory-aware test topology design and maintenance

- Fast and effective discovery of required resources using advanced search
- Simple drag-and-drop topology design and creation
- Topology validation and activation with a single click
- Embedded control of L1 switches - MRV, OnPath, APCON, Fiberzone, and more
- Automated route calculation over multiple L1 Switches
- Saving topologies in a central server for sharing by multiple teams

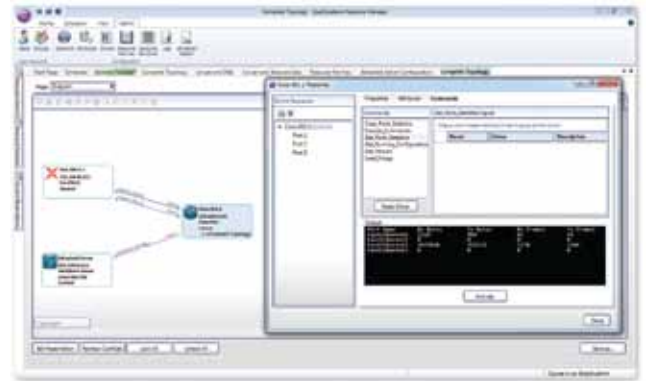
Centralized resource sharing across teams and sites

- Device planning and allocation through powerful scheduling and reservation UI
- Quick location of open slots for device usage
- Powerful and intuitive conflict resolution
- Elimination of overlapping reservations and test breaks



Streamlined device provisioning

- Vendor-agnostic integration with any network resource or third party application
- Built-in control of leading test and networking equipment brands (Layer 1 Switches, traffic generators, servers, storage, switches, routers and more)
- Open and easy creation of equipment control procedures using CLI, GUI and many other interface types, including Telnet, SSH, SNMP, Windows, Java, and web UIs



Powerful reporting and analysis

Simple generation of lab performance and utilization reports

- Organization-wide usage tracking
- Device allocation and lab setup optimization
- Informed decision-making about equipment purchases or replacement



To learn more about TestShell, visit our website:
www.tsieda.com
sales@tsieda.com
 (407) 339-4874, ext 111