

AutoVue™

Enabling Native Document Collaborative Visualization
Across the Global Enterprise



Setting the Standard for Enterprise Visualization

In today's global economy, organizations' geographically dispersed teams are faced with the challenge of providing shared and secure access to their proprietary documents and designs. The need for effective communication amongst these disparate teams is critical. Additionally, multi-format proliferation throughout the product life cycle and their associated desktop tools can inhibit global data exchange between participants and dramatically increase IT and user training costs.

Whether your organization requires a stand-alone application or a ready-made integration with one of several Document Management (DM), Product Lifecycle Management (PLM) or Enterprise Resource Planning (ERP) systems, AutoVue can provide a comprehensive enterprise visualization solution that allows all team members, regardless of geography, with the ability to natively view and markup multi-format product data and documentation from a secure, reliable source.

With AutoVue, the proliferation of desktop tools to support hundreds of file formats is eliminated, time-to-market is improved and IT maintenance and user training costs are significantly reduced.

⊕ Native Document Viewing

Unlike other enterprise visualization solutions, AutoVue relies on a document's native properties to accurately open, display and measure data. Native document viewing enables customers, suppliers, and partners to instantly and reliably view original documents without undergoing costly and error prone file conversions.

⊕ Cost

Organizations worldwide have already realized significant cost savings by deploying AutoVue's enterprise visualization technology. A single easy-to-use electronic solution reduces iterative engineering changes (ECOs), paper management and shipping expenses, user training and IT costs.

⊕ Time

AutoVue's intelligent viewing and collaboration functionality increases an organization's ability to accelerate review cycles and time to market. This is achieved by providing team members with access to data early in the design process, allowing for faster and more informed decision - making at all levels within an organization.

⊕ Security

AutoVue's Web Edition ensures that intellectual property and proprietary documents never leave the server - only a metafile rendering of a document is transmitted to the client for viewing and markup, safeguarding valuable intellectual property. Additionally, because AutoVue markups are created and saved on a separate layer as a different file, the integrity of the original document remains intact.

⊕ Collaboration

Collaboration across the enterprise requires that all users be able to access, review, and comment on product information being developed within an organization (engineering, manufacturing, purchasing, marketing, executive offices) or externally (business partners, suppliers, customers and regulatory bodies). AutoVue permits all users to view, markup and collaborate on documents electronically in real time or in a workflow, regardless of geography, thus reducing communication barriers and product lifecycle costs while accelerating project completion times.

⊕ Quality Control & Compliance

Quality and regulatory standards such as Sarbanes-Oxley, ISO, OSHA, FDA and RoHS/WEEE demand compliance with a strict set of requirements. AutoVue can help your organization meet regulatory compliance with advanced stamping, redaction and printing capabilities from its secure DM/PLM/ERP host system.

Access All Documents Anywhere

Imagine every knowledge worker in your extended organization's design and supply chain being able to review any new idea, drill into the details at will and instantly add their own feedback.

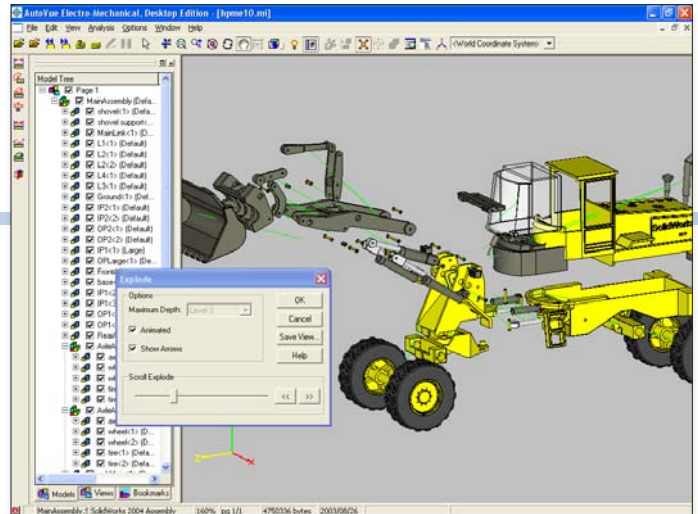
Visualization

Today's electronic environment delivers documents in a wide array of formats many of which users may be unable to view without a copy of the authoring application. AutoVue provides a single point of access to all key documents, regardless of format, from an easy-to-use interface thus simplifying the review, inspection and printing of critical information such as product designs. Regardless of whether the information comes from a 2D CAD drawing (AutoCAD, MicroStation, HPGL,...), a 3D model (CATIA, Pro/Engineer, Unigraphics,...), an electronic circuit design (Mentor, Cadence, Zuken,...), a scanner, a word processor, a spreadsheet or any of over 450 different file formats, AutoVue will open it and display it quickly and accurately.

Collaboration

Effective collaboration across an enterprise requires that all users be able to access, review and comment on information being developed within the extended design and supply chain in order to keep projects on time and on budget.

- ✦ AutoVue's web-based **Real-Time Collaboration** technology permits groups to come together quickly and easily, to share ideas, inspect and markup designs, coordinate activities, assign action items and resolve problems all in real-time. AutoVue's **Real-Time Collaboration** provides the advantages of same-room meetings without the disruption and expense of travel.
- ✦ **Markup** refers to the process of users annotating or redlining documents and saving their markups, allowing other users to access that feedback. With this method, users collaborate at their own pace or as the workflow demands.



Digital Mockup (DMU)

Virtual prototyping using AutoVue's Digital Mockup (DMU) allows designers to simulate models and assemblies on-the-fly to project real-world manufacturability and explore part re-use opportunities without the expense and time associated with conventional physical prototypes. Import parts/assemblies of various native CAD design formats to mockup a new assembly and detect interference between those parts. Combine both mechanical parts and electronics in a mockup without losing any of the intelligence and attribute data of the native files. With AutoVue's DMU, teams can anticipate engineering conflicts sooner, reducing costly prototyping spins.

Data Inspection & Design Validation

AutoVue provides powerful data inspection, analysis and design validation in a single tool which standardizes design reviews and ensures more predictable and cost effective processes.

Printing

AutoVue provides feature-rich printing functionality for greater control over printer or plotter output — reducing paper waste and costly workflow interruptions.

Integration Leader

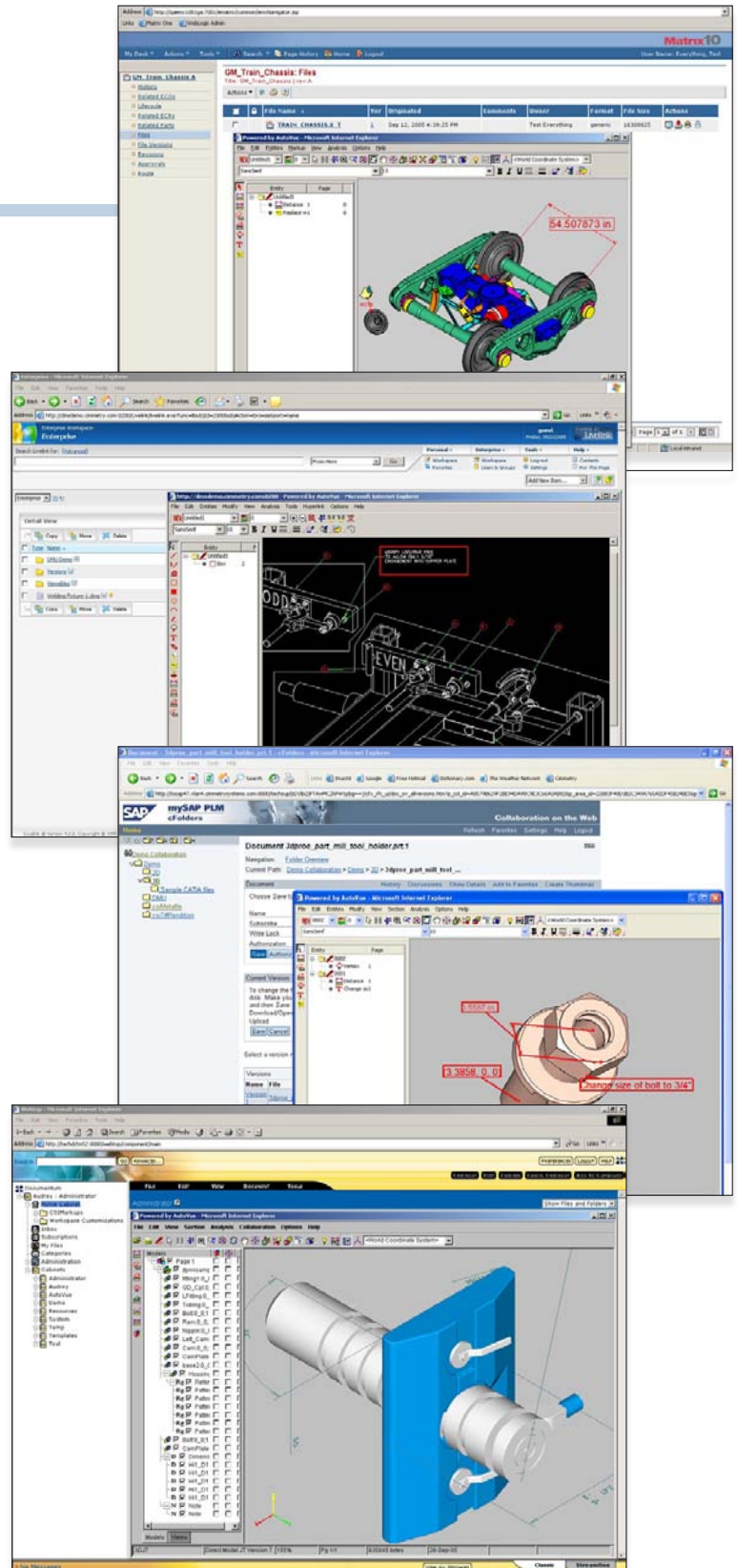
Increase the power of DM/PLM/ERP systems by integrating AutoVue's collaboration functionality into the workflow.

AutoVue has been designed to interface with other applications including many off-the-shelf systems to provide seamless visualization and collaboration capabilities. Integrations are developed by Cimmetry, software industry partners or by third party consultants and developers.

Ready-made connectivity for integrated enterprise visualization is available with several leading host systems including: Agile, Documentum, Sharepoint, MatrixOne, Open Text, SAP and SmarTeam.

- ✦ Provide a controlled end-to-end electronic collaboration solution
- ✦ Increase the value of host systems by incorporating universal document viewing
- ✦ Accelerate design review cycles and time to market
- ✦ Satisfy regulatory compliance requirements with integrated meta data and workflow driven stamping and printing functionality
- ✦ Streamline communication processes across the design and supply chain for improved decision-making
- ✦ Reduce printing and distribution costs
- ✦ Track product design and review information easily, and provide decision audit trails

For more information about integrating host systems with AutoVue, please visit Cimmetry at: www.cimmetry.com or call 514 735 3219.

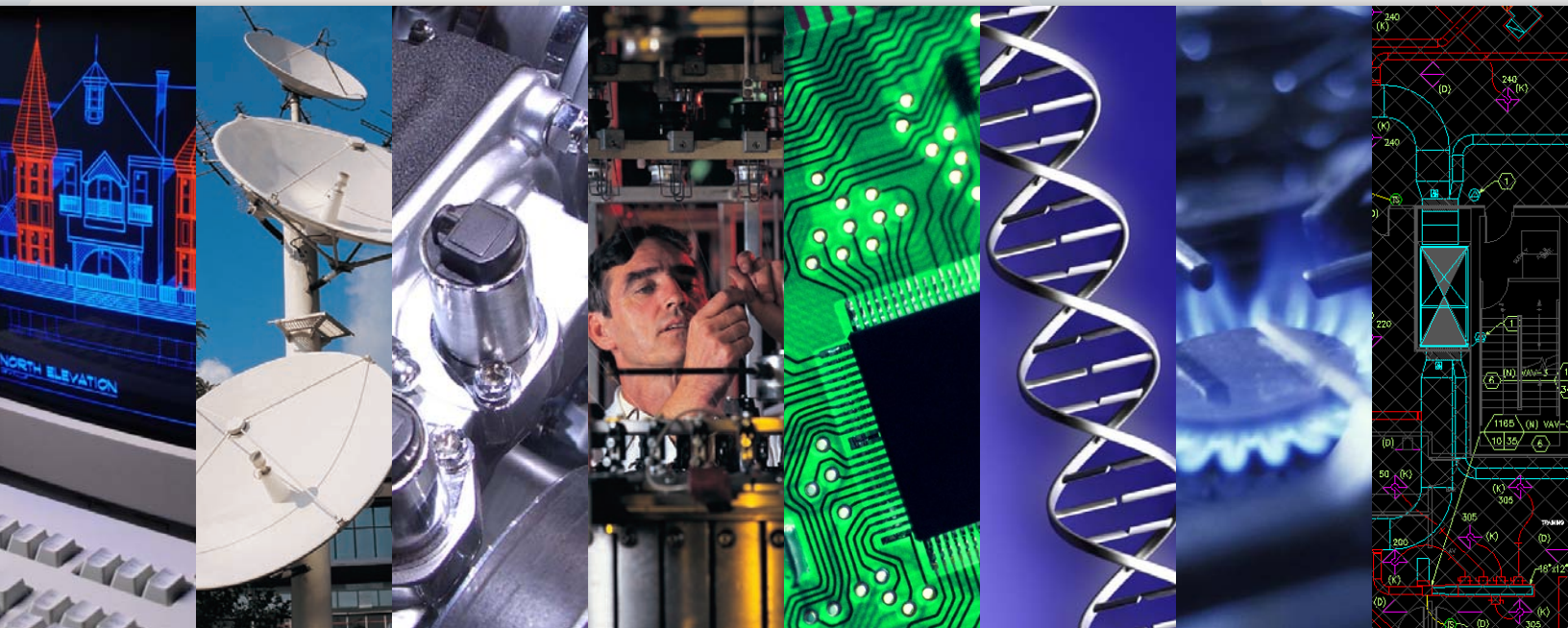




cimmetry

SYSTEMS

An Agile Software Company



Since 1988, Cimmetry Systems has been providing organizations world-wide with industry-leading enterprise visualization solutions that help shorten design cycles, accelerate review cycles, improve time-to-market, meet regulatory compliance standards and reduce user training and IT costs.

AutoVue is unique in its ability to provide all participants along the extended design and supply chain with a single end-to-end electronic document review process that can include hundreds of native 2D/3D CAD, EDA and office documents – using either a stand alone software offering or integrated with leading DM, PLM and ERP host systems.

AutoVue's in-house developed technology ensures more responsive, quality support to meet the business-critical needs of our customers and partners.

Web-based editions of AutoVue provide flexible yet easy-to-implement options for highly secure web browser viewing, inspection, annotation and collaboration that protects the organization's intellectual property and proprietary information.

AutoVue excels in several markets including:

- AEC (Architecture, Engineering and Construction)
- Aerospace & Defense
- Automotive
- Industrial Products
- Food & Beverage, Chemicals, Cosmetics, Paints, Plastics, Pharmaceuticals
- Electronics/High Tech
- Oil & Gas, Utilities

AutoVue™

Enabling Native Document Collaborative Visualization
Across the Global Enterprise

Cimmetry's products are available in several languages and are sold through Cimmetry and a global network of Value Added Resellers.
Visit our web site to locate a Reseller in your area.

**Download a fully functional demonstration copy
or try an online demo at <http://www.cimmetry.com>**



Cimmetry Systems, Corp.
400 Ste. Croix Avenue
Suite 200 East
Montreal, QC H4N 3L4

Telephone: 1 514 735 3219
Sales: 1 800 361 1904
Fax: 1 514 735 6440

General Enquiries: info@cimmetry.com
Sales Enquiries: sales@cimmetry.com